



Crossing Fever

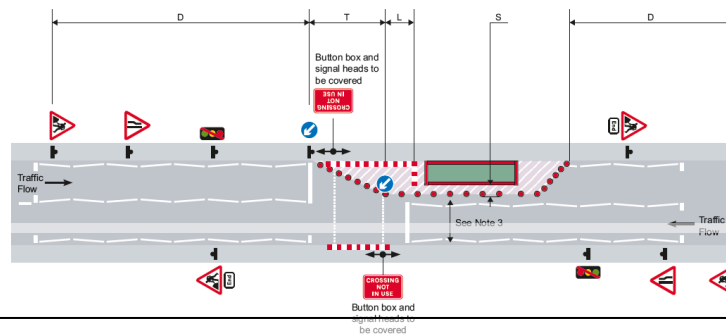
Closure of Pedestrian Crossing Points

As part of making a site safe and compliant it may be necessary to close a pedestrian crossing point and provide an alternative safe place for pedestrians to cross the road away from our works.

If a Pedestrian, Cycle (Toucan) or equestrian crossing has to be suspended owing to works you **MUST**:

- ensure the suspension has been **authorised** by the highway authority.
- agree with the highway authority what, if any, alternative arrangements will be provided for users of the crossing prior to suspension.
- ensure 'Crossing not in use' signs have been erected.
- ensure Zebra crossing globes, signal heads and push button units (including any tactile rotating cones under the push button units for visually impaired people) are covered using suitable covers **NOT** things like black bin liners.
- disable any audible warnings for visually impaired people and cover any tactile paving that can still be accessed.
- erect barriers across the accesses to the crossing; and
- close both sides' crossings if the works spread into one or both sides of a crossing that has a central refuge.

Works obstructing a signal controlled pedestrian crossing



DO's & DON'Ts

- **DO** Consider **ALL ALTERNATIVES** before you close a pedestrian crossing
- **DO** Complete a street works site specific risk assessment that includes pedestrian management
- **DO** Check you have authorisation to close a crossing from the Highway Authority and it is for the time you are doing it.
- **DO** Make sure you walk any alternative routes to ensure they are safe and compliant.
- **DO** Consider the safety of adults, children, wheelchair users and the partially sighted when deciding the right method.
- **DO** Use the correct bags and covers to close the crossing and cover the lights and beacons.
- **DO** Consider installing a temporary crossing point if the permanent crossing is going to be closed for an extended period
- **DON'T** Close a crossing unless you have to.
- **DON'T** Forget to bag off all lights, disable audible warnings and cover any push button units
- **DON'T** Leave a site without checking it is still safe for pedestrians.
- **DON'T** Start work until you are sure how you are going to manage pedestrians safely past/ through your works.

*HAUC(UK) thanks Morrison Water Services in their help in the creation of this guidance.